



Exploring for Fiji's Zinc, Copper, Silver and Gold.

TSX.V: AWE
OTC: THURF

Corporate Presentation

December 20, 2023

Forward looking statements

Certain oral and written statements contained or incorporated by reference in this presentation, including information as to future financial or operating performance of Thunderstruck and its projects, constitute forward-looking statements. All statement, other than statement of historical fact, are forward-looking statements. The words “anticipate”, “believe”, “budget”, “contemplate”, “continue”, “estimate”, “expect”, “intend”, “may”, “plan”, “schedule”, “target”, “will” and similar expressions identify forward-looking statements.

Forward-looking statements include, among other things, statements regarding targets, estimates and assumptions in respect of copper, gold, silver and zinc or other metal production and prices, operating costs and results, capital expenditures, mineral reserves and mineral resources and anticipated grades and recovery rates. Forward-looking statements are necessarily based upon a number of estimates and assumptions related to future business, economic, market, political, social, and other conditions that while considered reasonable by Thunderstruck, are inherently subject to significant uncertainties and contingencies. Many known and unknown factors could cause actual events or results to differ materially from estimated or anticipated events or results reflected in such forward-looking statements. Such factors include, but are not limited to: operating risks; uninsurable risks; uncertainties inherent in ore reserve and resource estimates: dependence on third party smelting facilities; environmental regulation and liability; currency risks; effects of inflation on results of operations; factors relating to title to properties; native landowner issues; dependence on key personnel; and future share price volatility and also include unanticipated and unusual events, many of which are beyond Thunderstruck's ability to control or predict.

Thunderstruck disclaims any intent or obligation to update any forward-looking statements, whether as a result of new information, future events or results or otherwise. All forward-looking statements made in this presentation are qualified by the foregoing cautionary statements. Investors are cautioned that forward-looking statements are not guarantees of future performance and, accordingly, not to put undue reliance on such statements.

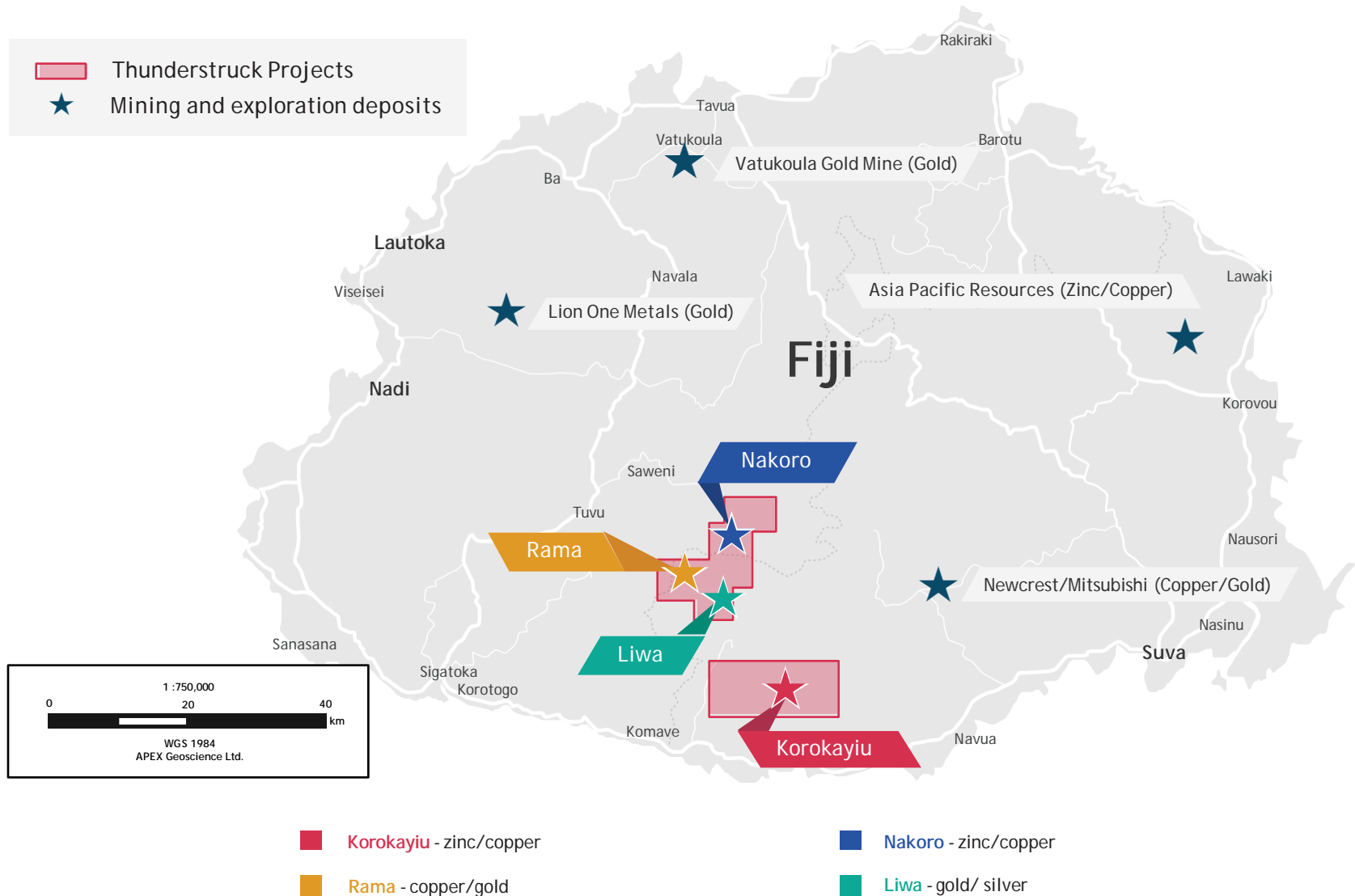
The Presentation contains historical exploration data that have not been verified by Thunderstruck Resources Ltd. and may not be accurate or complete, and therefore should not be relied upon. Mineral reserves and resources reported with respect to adjacent properties have not been verified by the qualified person and are not necessarily indicative of mineralization on Thunderstruck Resources Ltd. properties.

The Technical content of this presentation has been reviewed and approved by Kristopher Raffle, P.Geo. APEX Geoscience Ltd., the Technical Advisor to the Company and a Qualified Person as defined by National Instrument 43-101



Thunderstruck Projects and Major Mineral Deposits of Fiji

TSX-V: AWE
OTC: THURF



- **EXCHANGE:** Thunderstruck Resources Limited trades on the TSX Venture Exchange.
- **LAST UPDATED:** May 25, 2023
- **SYMBOL:** TSX-V: [AWE](#)
OTC-[THURF](#)

- ## Silver, Gold, Copper, Zinc



Overview

- All four of Thunderstruck's prospects, Liwa, Korokayiu, Nakoro and Rama are 100% owned.
- Thunderstruck owns a vast land package of high grade zinc, copper, gold and silver assets that covers nearly **3% of the main island of Fiji**
- Fiji is located on the Pacific Ocean's Ring of Fire, which contains many of the world's major gold and copper deposits
- Experienced management and technical team
- Low-cost country for mineral exploration and mining
- Good infrastructure
- One of the most developed economies in the Pacific

Why Fiji?

- Pro-mining government
- Long history of mining including the Vatukoula Gold Mine, in operation for over 80 years
- Skilled workforce
- Low sovereign, political and social risks
- High grade zinc, copper, silver, and gold potential
- Close to Asian markets
- Significant mines and deposits located nearby to Thunderstruck*

*Not necessarily indicative of mineralization on Thunderstruck Properties

Liwa Gold

- Highly prospective epithermal gold-silver prospect.
- Four priority gold zones identified over a 3 km northeast-southwest oriented structural corridor (Liwa Ridge, Jensen's, Lower Vatuvatulevu, Gun)
- Jensen's has yielded multiple high grade gold samples **up to 55 g/t Au in outcrop**¹
- Liwa Ridge is a broad zone of epithermal-style alteration and quartz veining with returning rock float samples of up to **11.1g/t Au (27g/t Ag) and 8.5g/t Au (109g/t Ag)**², in addition to trenching of **1.2g/t Au over 26.5m**, within a broader zone averaging **0.61 g/t Au over 71.3m**³
- Lower Vatuvatulevu **untested 160m geochemical anomaly** up to **2.48 g/t Au in soil**¹, and rock float sample of **41.1g/t Au and 1,205 g/t Ag**³
- IP/Resistivity surveys over gold targets reveal **strong resistive and coincident weak-moderate chargeability anomalies** interpreted to indicate silicified lithologies and potentially mineralized targets extending up to 300m depth⁴

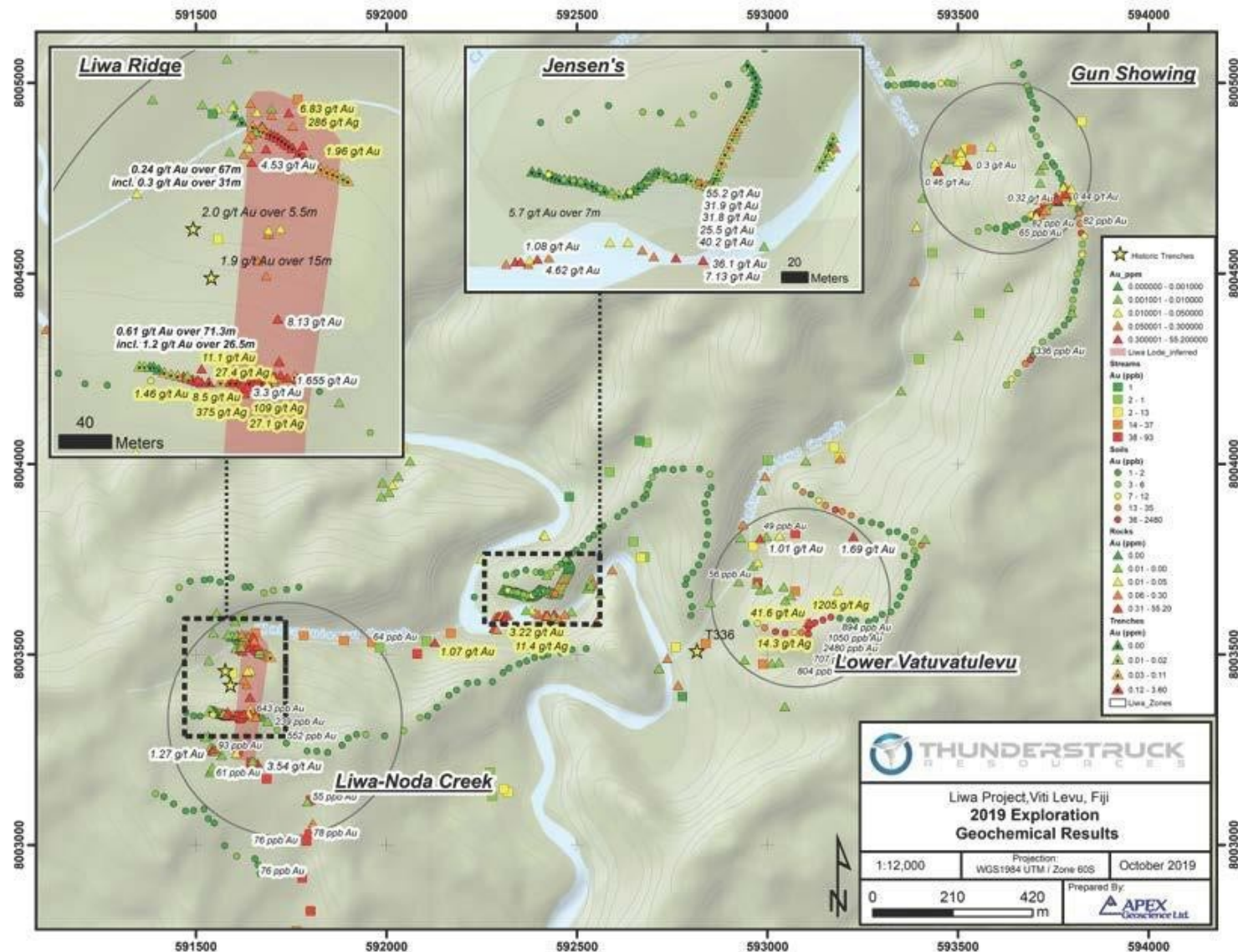
¹See Thunderstruck News Release Dated October 30, 2018

²See Thunderstruck News Release Dated October 11, 2019

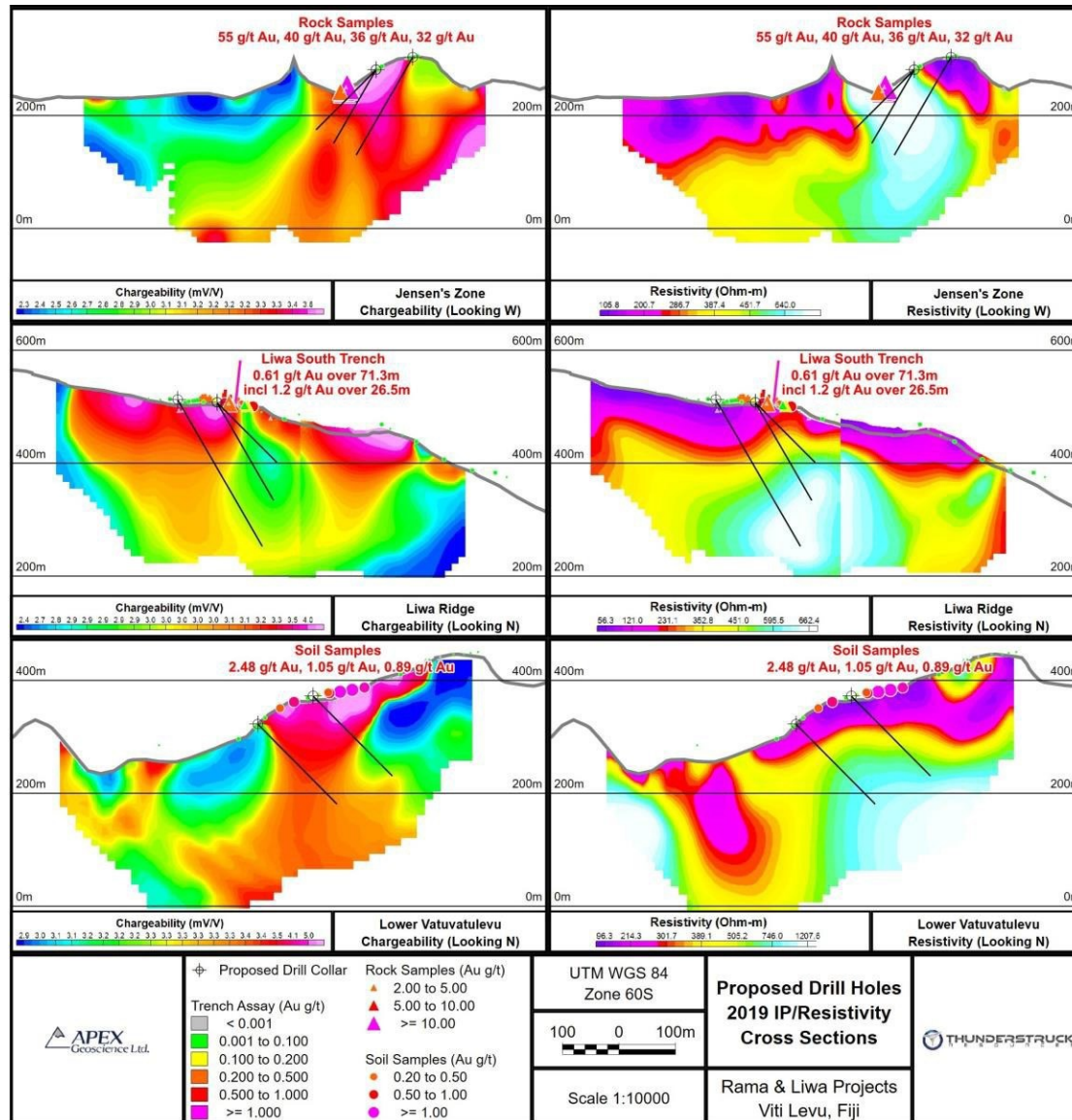
³See Thunderstruck News Release Dated February 13, 2018, sample width is interpreted to be 100% of the true width

⁴See Thunderstruck News Release Dated April 2, 2019

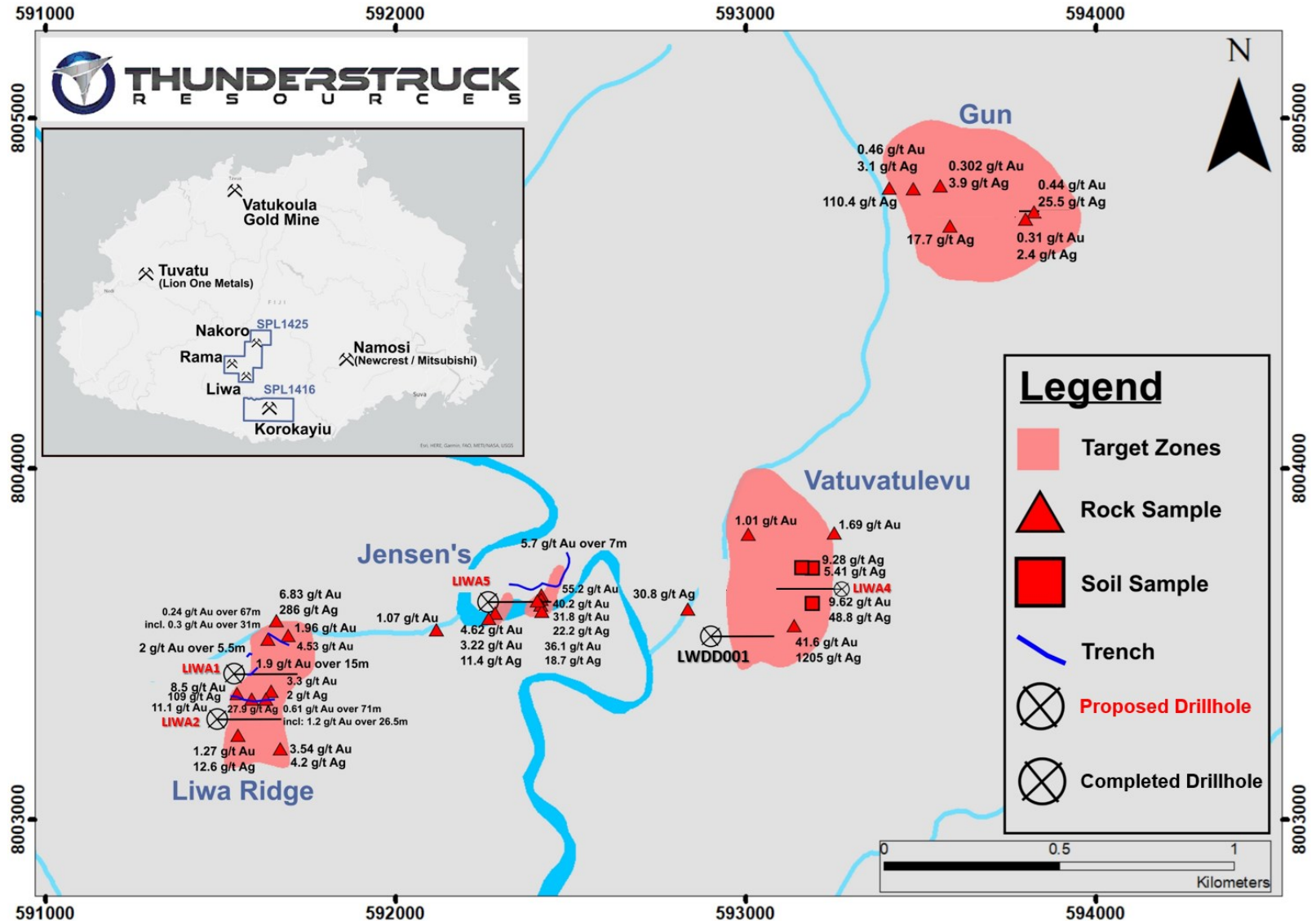
Liwa Gold 2019 Geochemical Results



Liwa Gold 2019 IP With Suggested Drill Targets

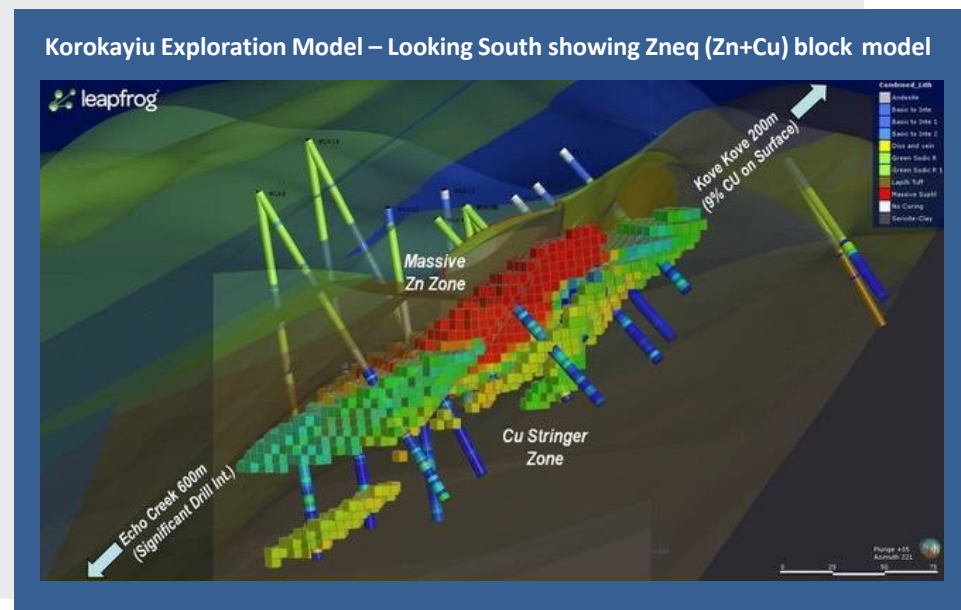


Liwa Gold 2023 Drill Targets



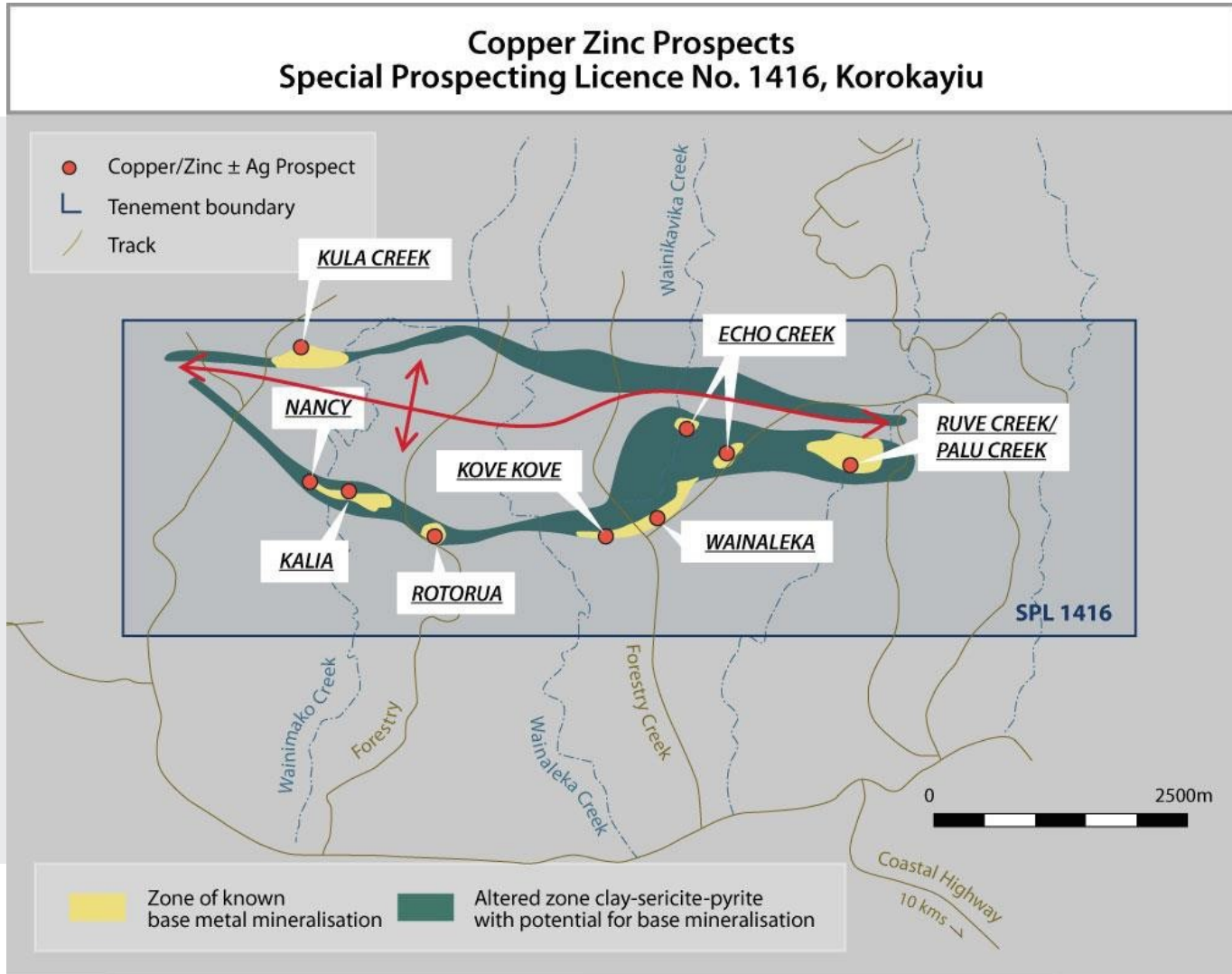
Korokayiu Zinc/Copper

- **High-grade zinc-copper** volcanogenic massive sulphide (VMS) discovery drilled by Anglo Pacific in 1977.
- Historic Resource - 250,000 tonnes @ 8% Zn and 2% Cu (1980 Golder Assoc. uncategorized¹)
- Open along strike and at depth.
- Deposit occurs within 100m of surface
- Near-surface open pit potential
- **15 km strike length** - including 8 more underexplored zinc-copper VMS prospects



¹Source: Golder Associates, Review of the Mining Potential of the Fijian Kuroko Style Mineral Discoveries, 1980. The resources are considered historic in nature and do not meet the criteria for a resource of any category as defined in "CIM Definition Standards on Mineral Resources and Mineral Reserves" dated November 29th, 2019, and as such should not be relied upon. Thunderstruck has been unable to verify these sources of information.

Korokayiu Zinc/ Copper



Korokayiu 2019 Exploration Summary

- **Ground gravity surveys** confirmed gravity response of Korokayiu VMS Deposit, and identified **multiple untested gravity anomalies** within the Korokayiu VMS horizon over a combined 1.4 km strike length¹
- **7 diamond drill holes totaling 904m** to verify historically reported zinc-copper VMS mineralization
- Drill hole **WLK17** intersected **13.8% Zn, 2.94% Cu, 114g/t Ag, and 1.08 g/t gold Au over 11 m²**, the highest-grade drill intercept to date, current or historically reported, from Korokayiu
- Drill hole WLK16A, collared 120m south of WLK17, intersected 21.6% Zn, 2.0% Cu, 81 g/t Ag, and 0.42 g/t Au over 2.77 m²
- Drill hole **WLK14B** intersected **14.5% Zn, 2.35% Cu, 111 g/t Ag, and 0.66 g/t Au over 6.31m²**
- Drill results to date highlight the potential of the eight additional, underexplored zinc-copper VMS prospects along 15 km prospective geologic trend.
- Given that VMS deposits commonly occur in clusters, the JV has applied to increase the tenement size 350% from 30 to 136 sq kms to secure the interpreted continuation of the prospective geologic horizon

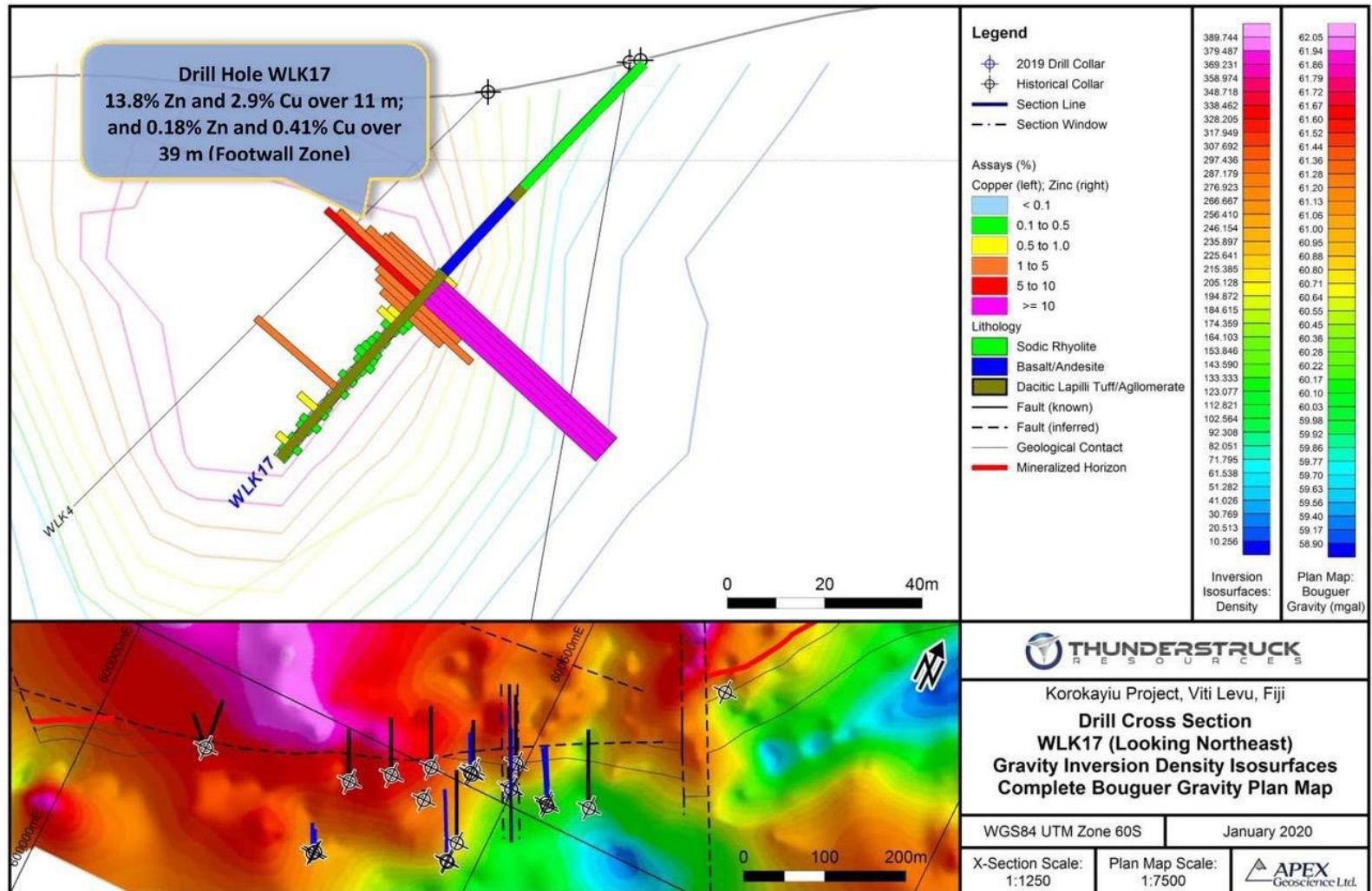
¹See Thunderstruck News Release Dated October 24, 2019

²The true width of mineralization is estimated to be 80-100% of the drilled interval

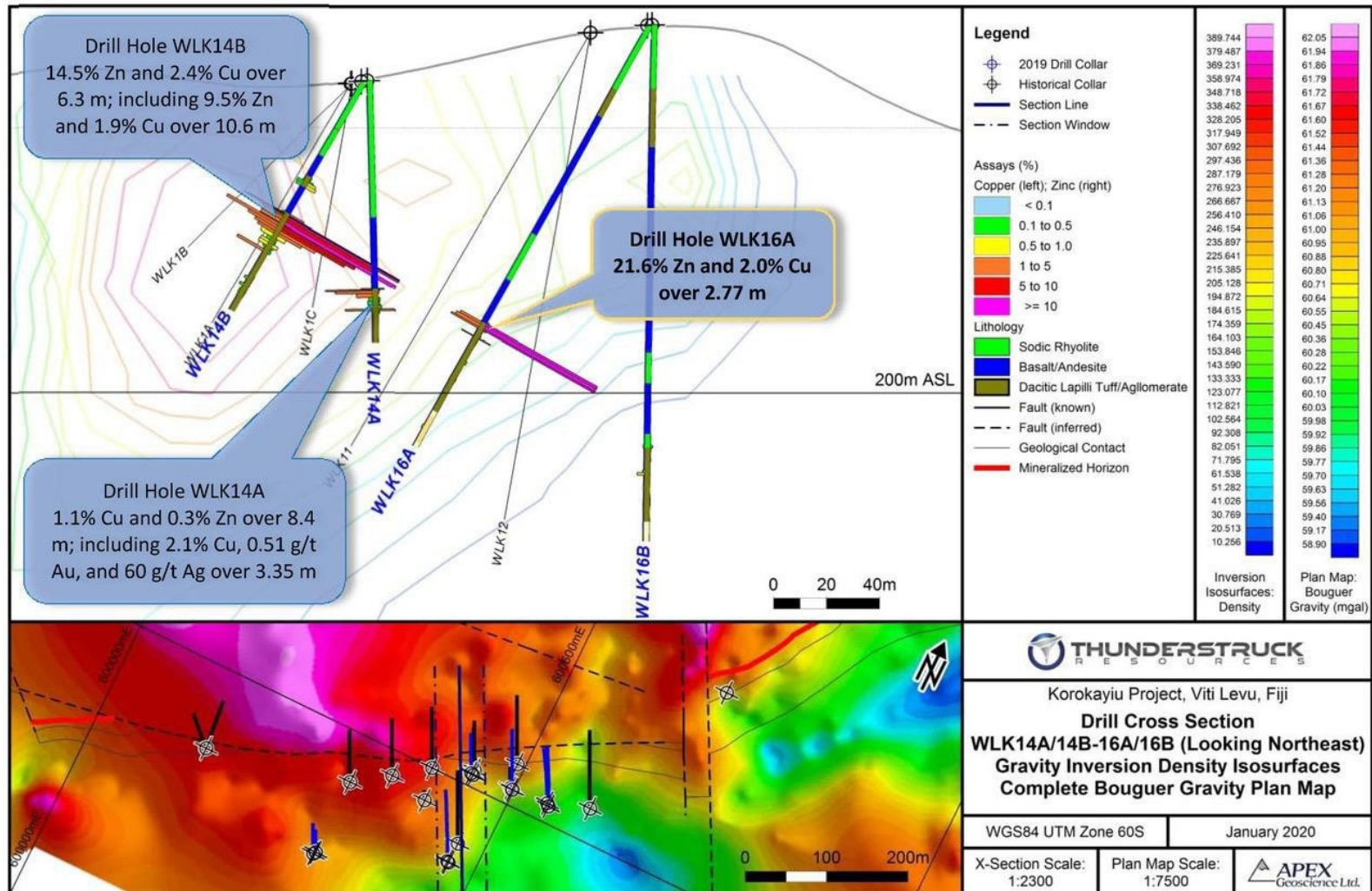
2019 Significant Diamond Drill Intercepts

Drill Hole	Released	From (m)	To(m)	Interval (m)	Zn (%)	Cu (%)	Ag (g/t)	Au (g/t)
WLK17	<i>Jan. 30, 2020</i>	60.5	71.5	11	13.77	2.94	113.7	1.08
<i>and (footwall zone)</i>		71.5	110.5	39	0.18	0.41	-	-
WLK16A		128.06	130.83	2.77	21.58	2.04	81.1	0.42
WLK14B	<i>Dec. 11, 2019</i>	57.05	67.60	10.55	9.51	1.87	54.5	0.48
<i>including</i>		57.73	64.04	6.31	14.51	2.35	111.1	0.66
WLK14A		78.82	87.20	8.38	0.28	1.15	27.5	0.23
<i>including</i>		78.82	82.17	3.35	0.11	2.05	59.7	0.51

2019 Diamond Drill Section WLK17



2019 Diamond Drill Section WLK14A/B – WLK16A/B



Korokayiu 2020 Exploration Summary

(Limited work due to Covid19 restrictions)

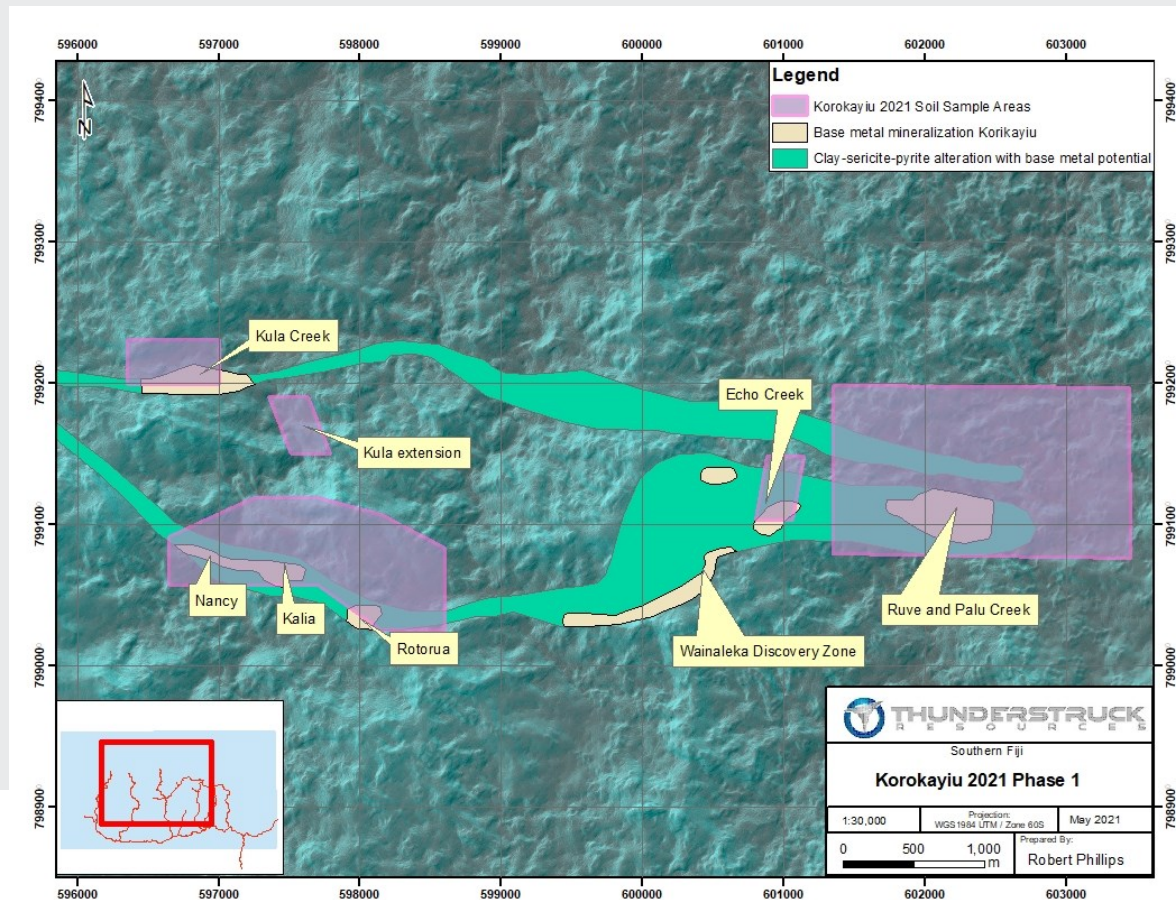
- Drill hole WLK19A collared 275 m north-east along strike from discovery zone intersects **2.97% Zinc (Zn) and 26.6 grams-per-tonne Silver (g/t Ag), over a drill core interval of 5.42 meters.**
- 6 line kilometers of IP surveys identify characteristic resistivity anomalies near WLK19 and up to 2500 m along strike.
- Drilling ore sent from the discovery zone for metallurgical test processing.

Drill Hole	Released	From (m)	To(m)	Interval (m)	Zn (%)	Cu (%)	Ag (g/t)	Au (g/t)
WLK19A	2020	106.03	111.45	5.42	2.97	0.21	26.6	-

Korokayiu 2021 Exploration Program

(Limited work due to Covid19 restrictions)

- Soil and whole rock geochemistry around seven presently known high priority targets along 6.5km of strike.



Rama Copper/Gold

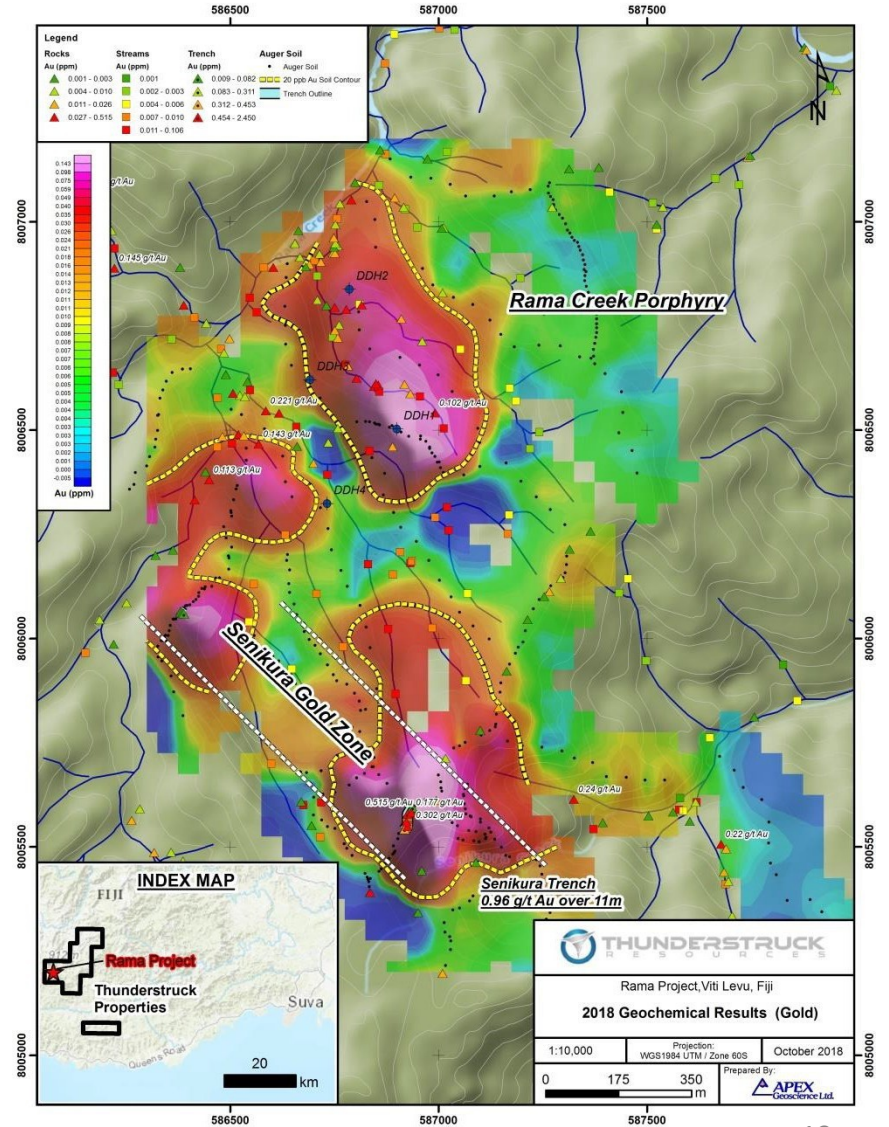
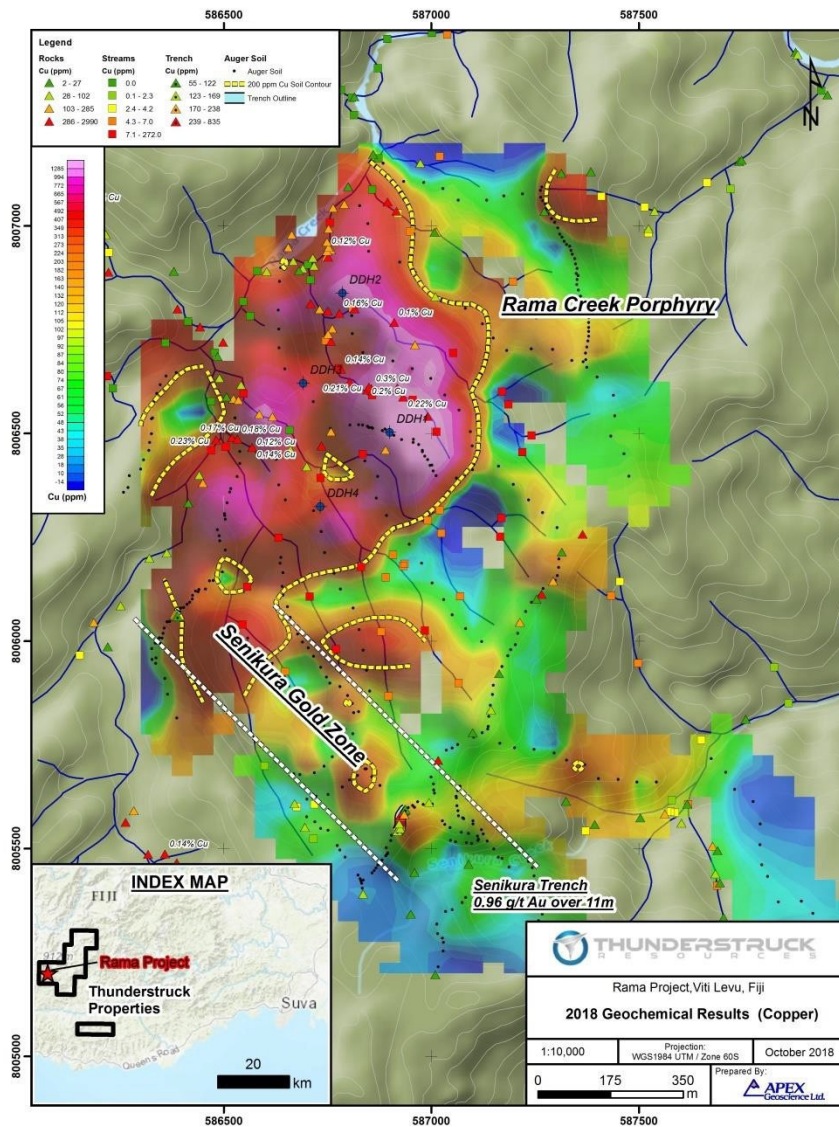
- Anglo 1975 historical drilling targeted 800m diameter Cu-Au anomaly and intersected **244m @ 0.22% Cu between 6 and 250m; and 0.23 g/t Au between 6 and 72m¹**
- Interpreted as a classic porphyry Cu-Au system with phyllic and argillic alteration zones overprinting an earlier potassic core
- Soils collected over centre of Cu-Au porphyry **240m avg. 0.27% Cu and 0.15 g/t Au²**
- IP/Resistivity survey inversion shows a chargeability-conductivity anomaly that extends to a depth of at least 500 m, and 150m below the limit of historic drilling by Anglo Pacific, which ended in mineralization
- Thunderstruck recently doubled copper-gold target to 1.5-kilometer potential strike length through systematic soil sampling and discovery of Senikura Gold Zone to the south³
- Senikura Gold Zone trenched **0.55 g/t Au over 38m; incl. 0.96 g/t Au over 11m** in weathered outcrop². Senikura Zone may be a higher level manifestation of porphyry hydrothermal system

¹The relationship between drill intercept and true width of mineralization is not known

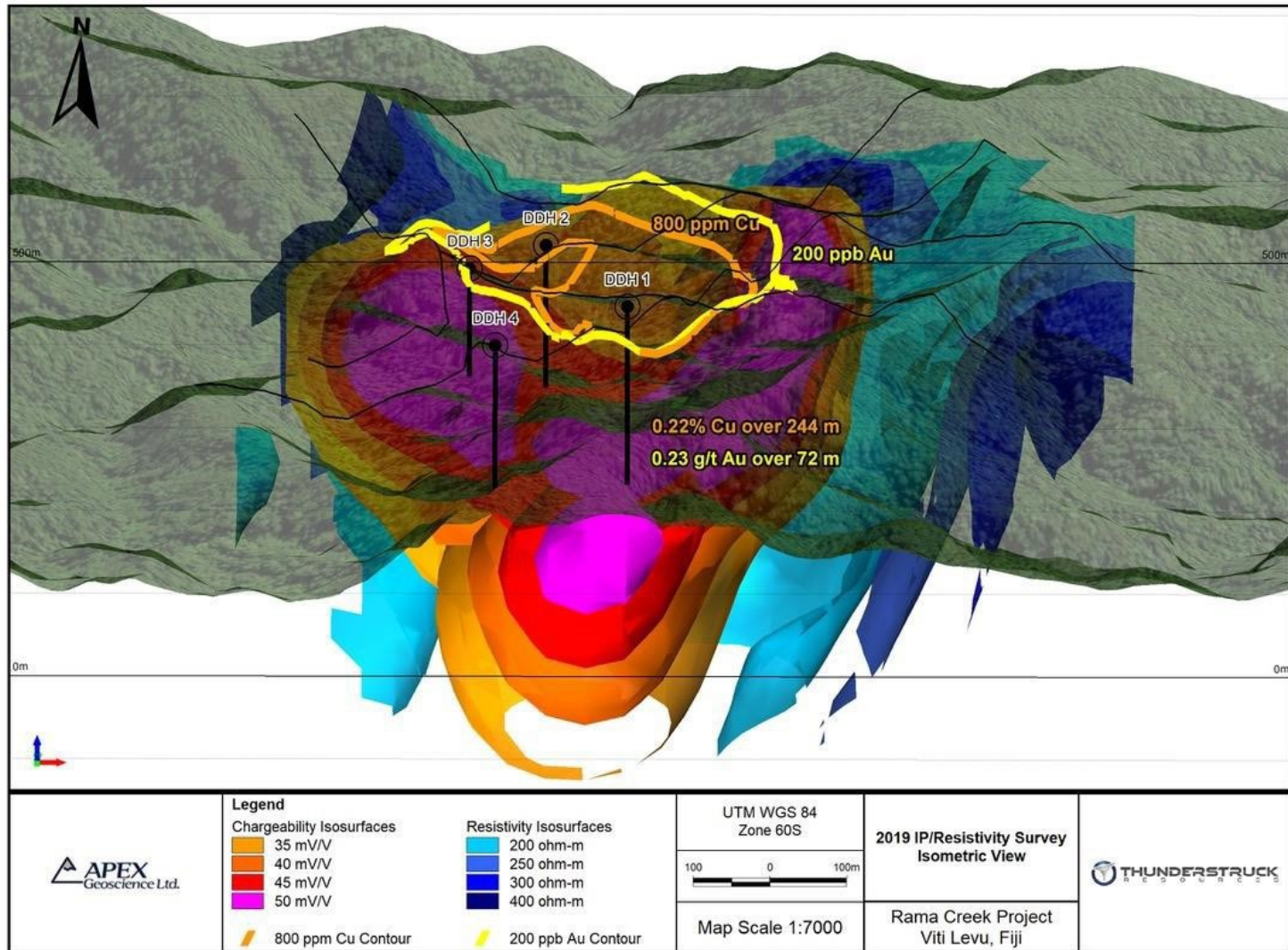
²See Thunderstruck News Release Dated March 1, 2019, the true width of mineralization is not known

³See Thunderstruck News Release Dated October 22, 2018

Rama – Cu-Au Geochemistry

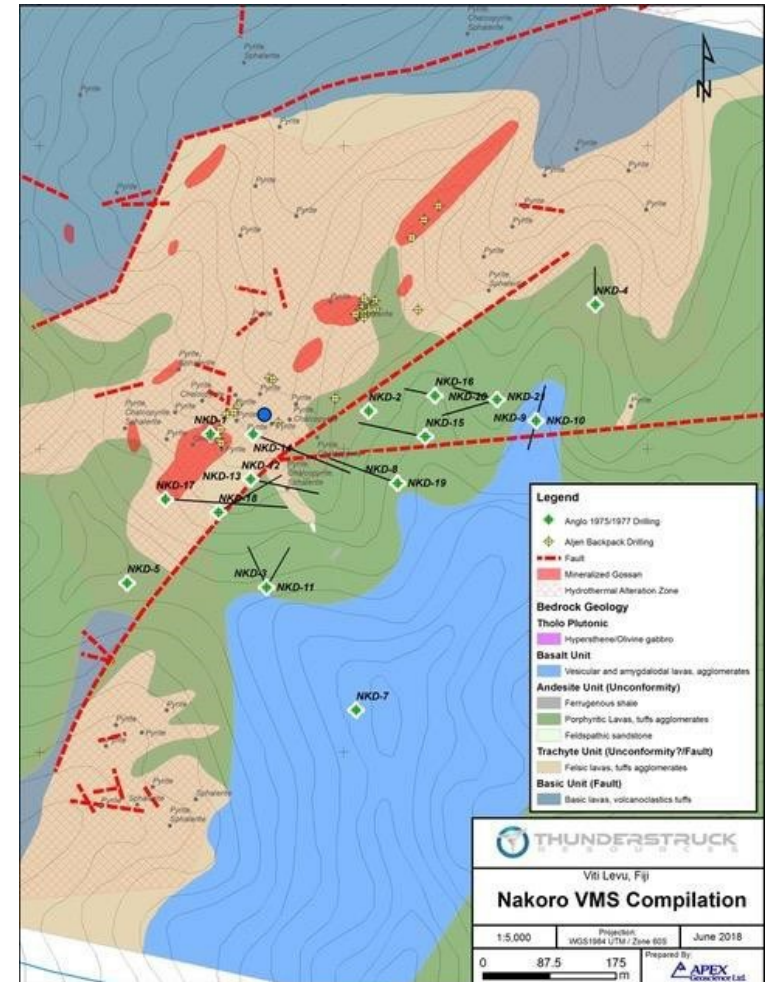


Rama - IP/Resistivity



Nakoro VMS Overview

- Zinc-copper volcanogenic massive sulfide
- Anglo Pacific intersected historical **high grade values** including –
 - 12.0m¹ @ 12.7% Zn and 0.3% Cu (NKD2)
 - 23.2m¹ @ 5.1% Zn and 0.5% Cu (NKD13)
- Historical resource 450,000 tonnes @ 11.6% Zn and 0.64% Cu²
- Open at depth and along strike
- Regional magnetics interpreted to indicate 8 km untested prospective geologic horizon
- Potential for multiple additional VMS discoveries



¹True widths estimated at 80-100% of drilled interval

²Source: Golder Associates, Review of the Mining Potential of the Fijian Kuroko Style Mineral Discoveries, 1980. The resources are considered historical in nature and do not meet the criteria for a NI 43-101 compliant resource of any category and as such should not be relied upon. Thunderstruck has been unable to verify these sources of information.

The Thunderstruck Team

Management

■ **Bryce Bradley** — President & CEO, Co-Founding Director

Bryce Bradley (CEO/President) With a strong background in Capital Markets and Investment Banking, Ms. Bradley has facilitated the structuring and financing of dozens of private and publicly traded small and micro-cap companies. She founded and served as President of two Canadian merchant banks focused on capital raising and advisory services for mining exploration companies. Ms. Bradley co-founded and financed Thunderstruck Resources and has served as Director, President and CEO since securing its suite of Fijian assets and taking the company public on the Toronto Stock Exchange in 2013.

■ **Bobby Dhaliwal** — CFO

Mr. Dhaliwal works as a financial consultant with a number of TSX-V and CSE listed companies in the resources and technology sector, including in the roles of CFO and controller. These companies are Canada based with various international operations. His professional experience includes exploration and mining companies, assistance on initial public offerings, continuous disclosure and financial reporting, implementation of accounting software, various equity financings and implementation of internal control policies. Mr. Dhaliwal holds a Bachelor of Accountancy as well as the designation of Chartered Professional Accountant (CPA) in Canada.

■ **Wilson Michael** — Director of Thunderstruck Pte Ltd.

Mr. Michael is a Fijian national and has acted in the dual roles of CFO and Director of Thunderstruck Pte Ltd for several years. He has also been a CFO for other resource companies in Fiji, so is familiar with industry-specific accounting requirements. He brings a sound knowledge of Fijian business practices and regulatory issues, having worked in various roles as accountant, CFO and manager for a variety of companies in the Pacific Islands, including property developers, international shipping operators, mobile phone companies and local municipalities.

Mr. Michael is an Associate of the Institute of Chartered Secretaries and Administrators.

Directors

■ **Brien Lundin** — Co-Founder and Chairman of the Board

Brien Lundin is a co-founder and Director of Thunderstruck Resources, Ltd.. His decades-long career has included analyzing and speculating in the metals, mining and technology sectors. Lundin also serves as President and CEO of Jefferson Financial, Inc., a private company that hosts the annual New Orleans Investment Conference, which is now in its 47th year of educating investors. In addition, he edits and publishes Gold Newsletter, which stands as the oldest continuously published precious metals and mining advisory, having served as the cornerstone of the industry since 1971..

■ **Bryce Bradley** — President & CEO, Co-Founding Director

Bryce Bradley (CEO/President) With a strong background in Capital Markets and Investment Banking, Ms. Bradley has facilitated the structuring and financing of dozens of private and publicly traded small and micro-cap companies. She founded and served as President of two Canadian merchant banks focused on capital raising and advisory services for mining exploration companies. Ms. Bradley co-founded and financed Thunderstruck Resources and has served as Director, President and CEO since securing its suite of Fijian assets and taking the company public on the Toronto Stock Exchange in 2013.

■ **Linnea von Hessert** — Director

Ms. von Hessert is a geologist with over 20 years experience in the mining industry, having worked for majors and juniors as well as the Bureau of Land Management in Nevada. She is an active investor with significant holdings in the mineral exploration industry. She graduated from the University of Montana with a B.S. in geology in 1999.

■ **Eric Roth** — Director

Mr. Roth holds a Ph.D. in Economic Geology from the University of Western Australia and is an economic geologist with over 35 years of experience in international minerals exploration and mining project evaluation. Prior to Capella, he was Chief Operating Officer of Mariana Resources Ltd., which was acquired by Sandstorm Gold Royalties in July 2017 for the high-grade Hod Maden copper-gold discovery in NE Turkey. Prior to this, Mr. Roth was Chief Executive Officer of Aegean Metals Group Inc. (original acquirer of the Hod Maden project) and President and Chief Executive Officer of Extorre Gold Mines Ltd. (discoverer of the high-grade Cerro Moro gold-silver deposit in Santa Cruz Province, Argentina, which was acquired by Yamana Gold Inc. in mid-2012 for CAD 440M).

Eric worked for AngloGold Ashanti Ltd. ("AGA") between 2002 and 2008, initially as the Lima-based Peruvian project and South American opportunities manager and subsequently as the Johannesburg-based Global Head of greenfields exploration. During his Johannesburg tenure, AGA's greenfields exploration teams brought in over 20+Moz Au in new Inferred Resources through discoveries in Colombia (Colosa, Gramalote), Australia (Tropicana), and the DRC (Mongwalu) at a discovery cost of <USD 15/oz. Prior to AGA, Eric worked with TSX-listed Aur Resources Inc., discoverer of the high-grade Louvicourt VMS deposit located near Val d'Or, Quebec.

Eric is a Fellow of the Australian Institute of Mining and Metallurgy (FAusIMM), a Fellow of the Society of Economic Geologists (SEG), and a principal of consulting firm ER Global Consulting SpA..

Advisors

■ **Tookie Angus** — Advisor (IN MEMORIAM)

Thunderstruck is saddened by the passing of our longtime friend, shareholder and advisory board member, Tookie Angus. “Tookie was a force of nature, stated President/CEO Bryce Bradley, “He has shaped the lives of many people, and we will miss him professionally as an experienced advisor and personally as a friend and mentor. He was a rare and unique individual and has left the world a better place. Our heartfelt sympathies and condolences to his wife Helen and loved ones, we are grateful that he was part of our lives and he will be sorely missed.” Tookie spent the last 40 years focusing on the structuring and financing of significant international exploration, development and mining ventures. He served as Chairman of the Board of B.C. Sugar Refinery Ltd. and Nevsun Resources. He has served as director of First Quantum Minerals, and Canico Resources Corp. until its takeover by CVRD in 2005. He was a director of Bema Gold until its takeover by Kinross Gold in 2007. Additionally, he was Managing Director of mergers and acquisitions for Endeavour Financial, a director of Ventana Gold until its takeover by AUX Canada Acquisition in 2011, and a director of Plutonic Power until its merger with Magma Energy in 2011. At the time of his passing, he was Chairman of K92 Mining and Sun Summit Minerals, and a valued member of Thunderstruck’s Advisory Board.

■ **Ian Gandel** — Advisor

Mr. Gandel is a successful Melbourne based businessman with over 20 years’ experience in the exploration and mining sectors. Currently, Mr. Gandel is Independent Non-Executive Chairman of Alliance Resources Ltd (Gold & Iron Ore), Alkane Resources Ltd (Gold and Copper) and Australia Strategic Materials Ltd (Rare Earths and critical metals) and has grown their respective market capitalizations significantly.

Outside of the resource sector, Mr. Gandel has also been involved in the construction and real estate development of some of Australia’s largest shopping centers and previously with the building of the well-known Australian Priceline retail drug store chain.

Contact

THUNDERSTRUCK RESOURCES LTD.

Suite 1500 – 409 Granville Street
Vancouver, BC V6C 1T2, Canada

Bryce Bradley

CEO

bryce@Thunderstruck.ca